

# Agricultural Innovation Systems

## Introduction

**Rasheed Sulaiman V**

6<sup>th</sup> GFRAS Annual Meeting, Kyrgyzstan

15 September 2015

What is Innovation?

What is the role of Extension/  
RAS in Innovation?

# Changing views on Innovation and Extension

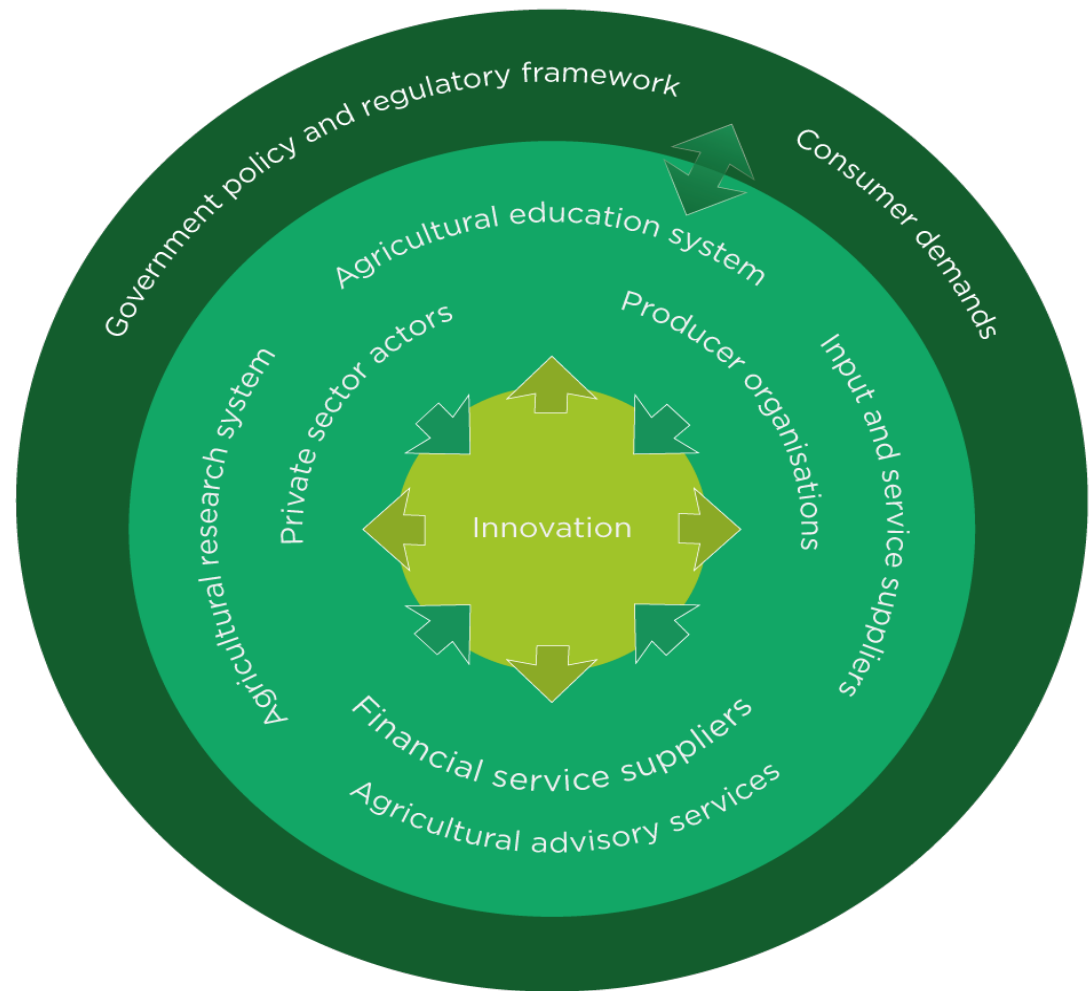
- 1960s –Innovation as a new technology developed by scientists transferred by extension to farmers (R-E-F)
  - Extension- Disseminate/Communicate new knowledge
- 1970s- Different type of innovation- farmers also innovate, institutional innovations too
- 1980s- Innovation as an outcome of interaction among different stakeholders (AKIS)
  - Extension to facilitate innovation



# New understanding of innovation and Extension (from 2000 onwards)

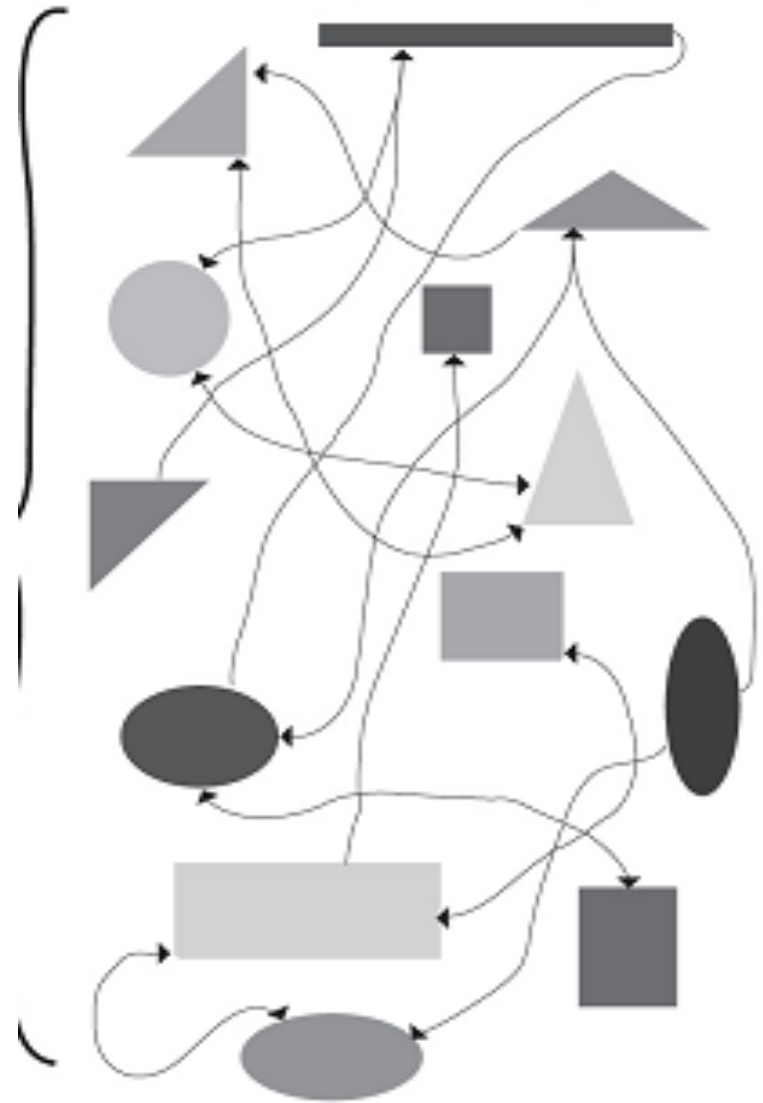
Innovation is a  
process of  
generating,  
accessing and  
putting  
knowledge into  
use

Extension to play a  
connecting role  
to catalyse  
innovation

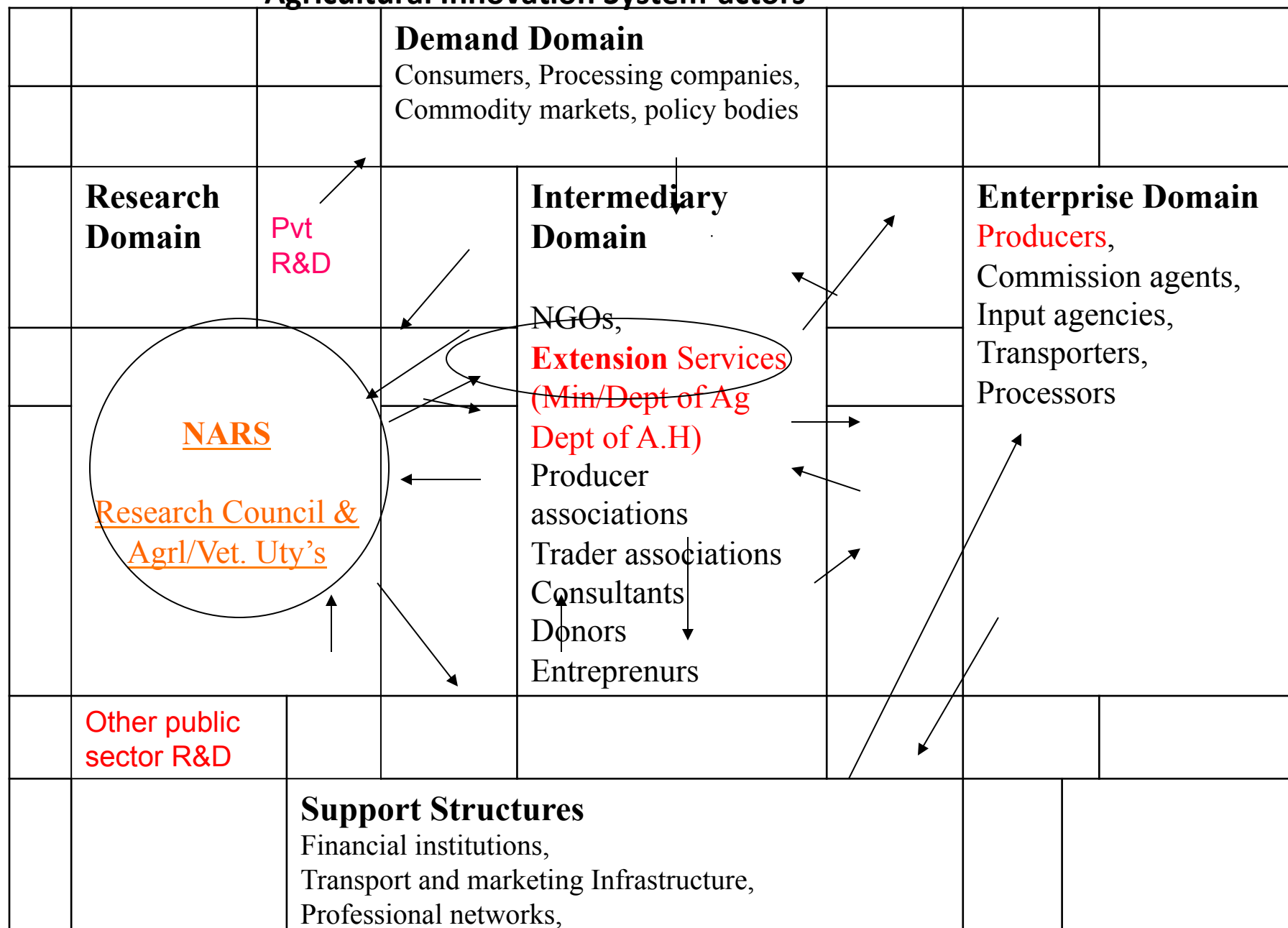


# What we mean by innovation now?

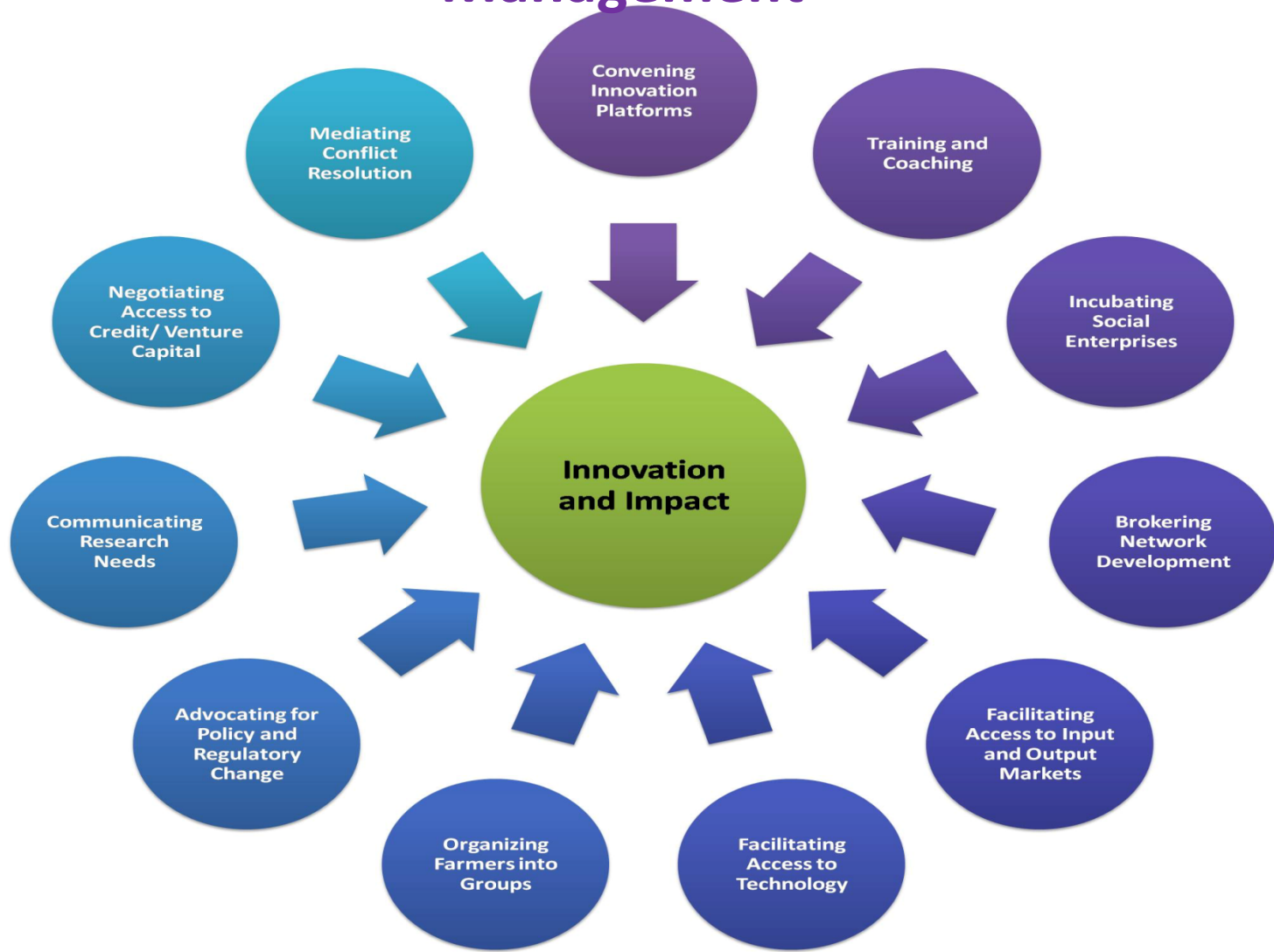
- Innovation happens when different pieces of knowledge, technology and information are put together in context specific and socially embedded ways
- Transferring invention is not enough for innovation



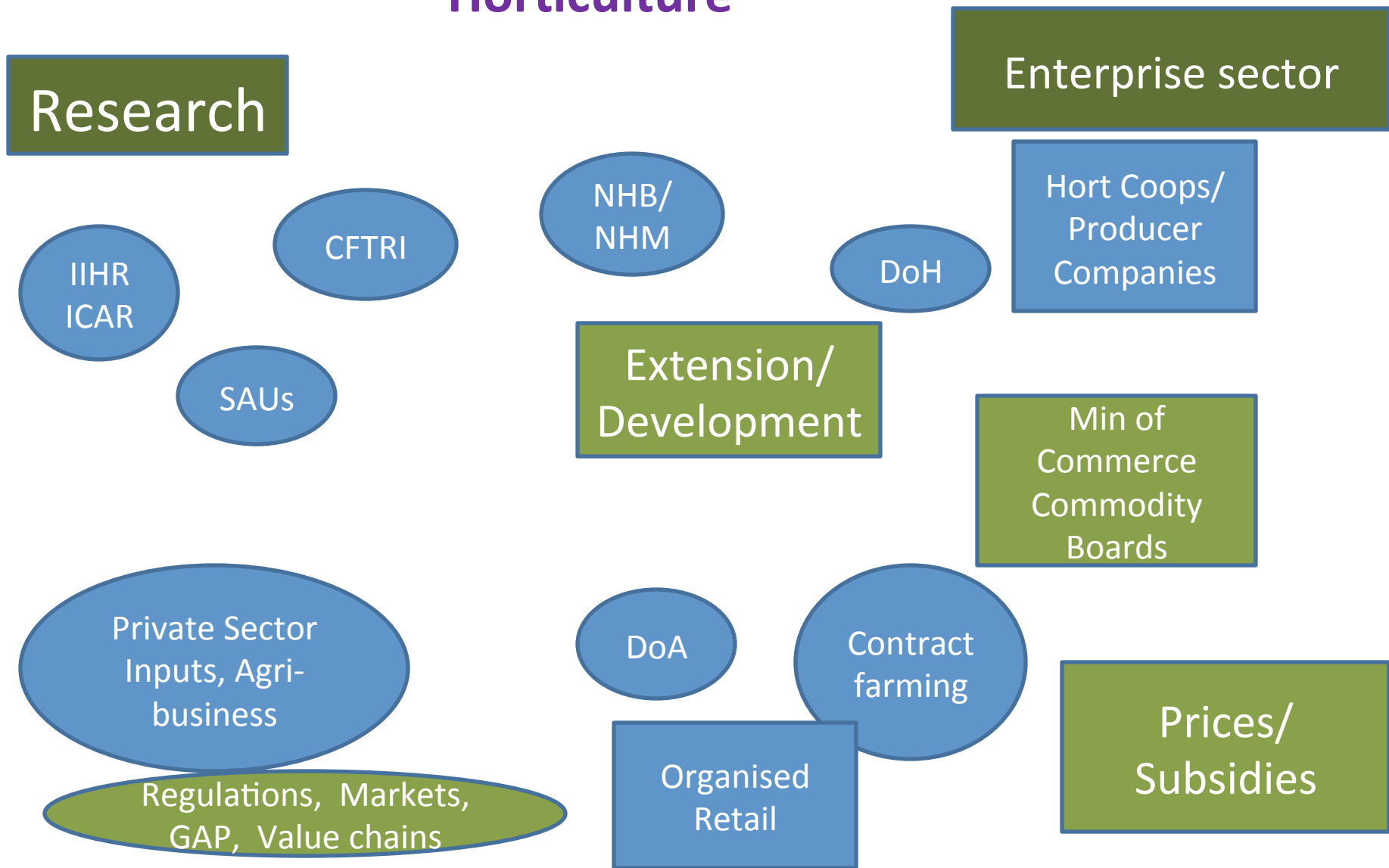
## Agricultural Innovation System-actors



# Putting new knowledge into use: Innovation Management



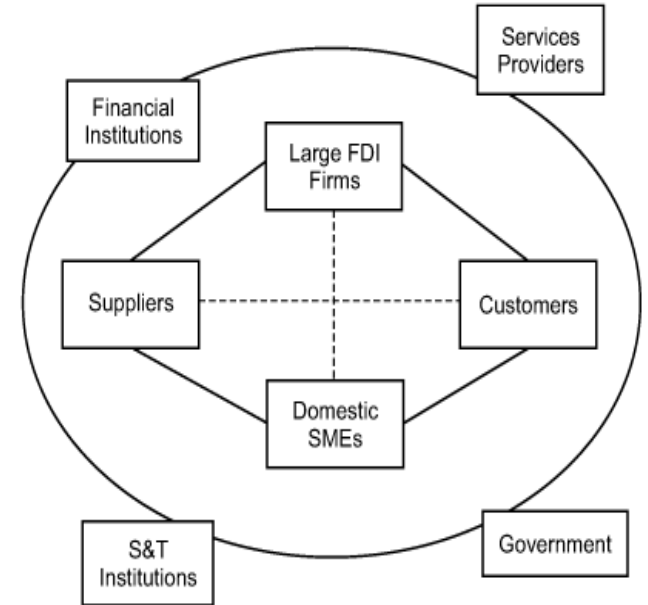
# Horticulture





## AIS- Main attraction

- It recognizes innovation as a **process** of *generating, accessing and putting knowledge into use*
- **Interaction** and knowledge flows among different actors
- **Institutions** matter-habits and practices shape the nature of these interactions
- **Policy and the enabling environment** are critical



# Why AIS? Need new frameworks

- New challenges beyond productivity
- We need new frameworks to address new challenges
- “Innovation Systems” offers a potentially useful framework for analysis (of existing situation) and (identifying appropriate) intervention



# Putting AIS into practice

- **Diagnosis of Innovation Capacity:** Who does what and how they are related or not related?
- **Promote interaction and Knowledge flows** among actors
  - Innovation Platforms
  - Innovation brokering
  - Innovation grants
  - Innovation management
- **Facilitating policy changes**
  - Policy working groups
  - Sector coordination agencies
  - Innovation support facility

# RAS within AIS

- RAS- a very important actor within AIS
- It should play more of a connecting role among the different actors
- Need new capacities at different levels
  - Individuals
  - Organisational
  - Enabling environment



**The “New Extensionist”:  
Roles, Strategies, and Capacities  
to Strengthen Extension  
and Advisory Services**

Global Forum for Rural Advisory Services  
November 2012

# Strengths

- AIS recognise the importance of different actors and the complementary knowledge they hold
- It recognises the importance of institutional and policy changes to promote interaction
- AIS is helping RAS to reinvent more relevant roles
  - from technology delivery to enabling innovation
- It highlights the importance of developing new capacities within RAS to play these roles

# Challenges

- AIS is not a blueprint for organising innovation as many believe
- Tendency to cherry pick ideas such as innovation platforms without considering the institutional changes needed
- Limited competencies to manage innovation

# Thanks